

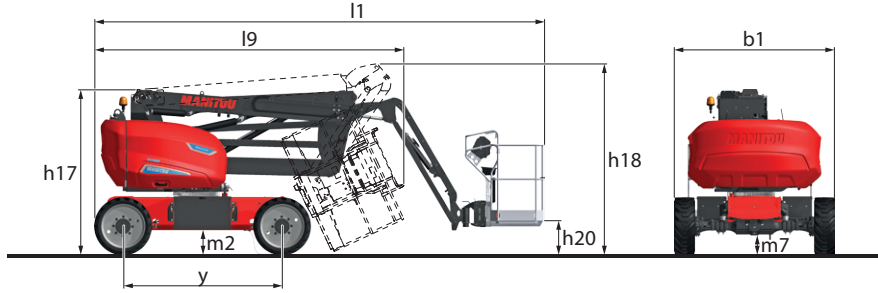
THIS ALL-TERRAIN MOBILE AERIAL WORK PLATFORM IS DESIGNED TO OPERATE ON NATURAL OR UNDEVELOPED LAND, OR CONSTRUCTION SITES, IN WORKSHOPS, OR IN INDUSTRIAL WAREHOUSES.

⚠ IMPORTANT ⚠

This document is a short recap on how to operate a mobile aerial work platform and should in no way be substituted for the manual required by Directive 2006/42/EC (European Union) or "2008 No. 1597 Regulation" (United Kingdom), which should be read and understood by the operator beforehand and stored in the platform. All the instructions, including safety instructions, which are in the operator's manual but are not included in this document should be implemented and enforced. The operator must have received proper training and must comply with the applicable road traffic rules.

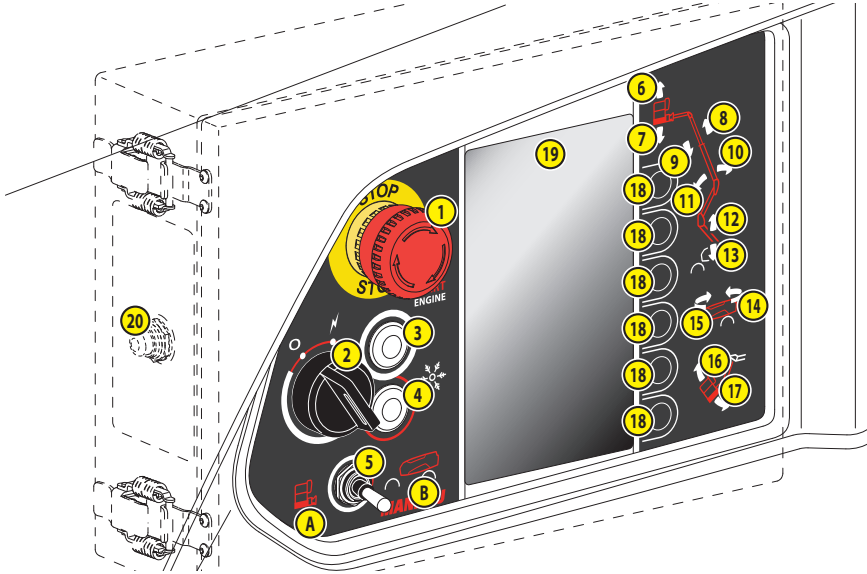
TECHNICAL SPECIFICATIONS - STANDARD WHEELS AND STANDARD PLATFORM

MACHINE WEIGHT	
- Unladen	6,400 kg (14,109 lb)
- With nominal load	6,650 kg (14,659 lb)
PLATFORM CAPACITY	
- 2 people	250 kg (550 lb)
MACHINE SPEED	
- Working speed	0.7 km/h (0.43 mph)
- Hare speed	5.2 km/h (3.2 mph)
- Reduced speed	3.4 km/h (2.11 mph)
- Tortoise speed	2.5 km/h (1.56 mph)



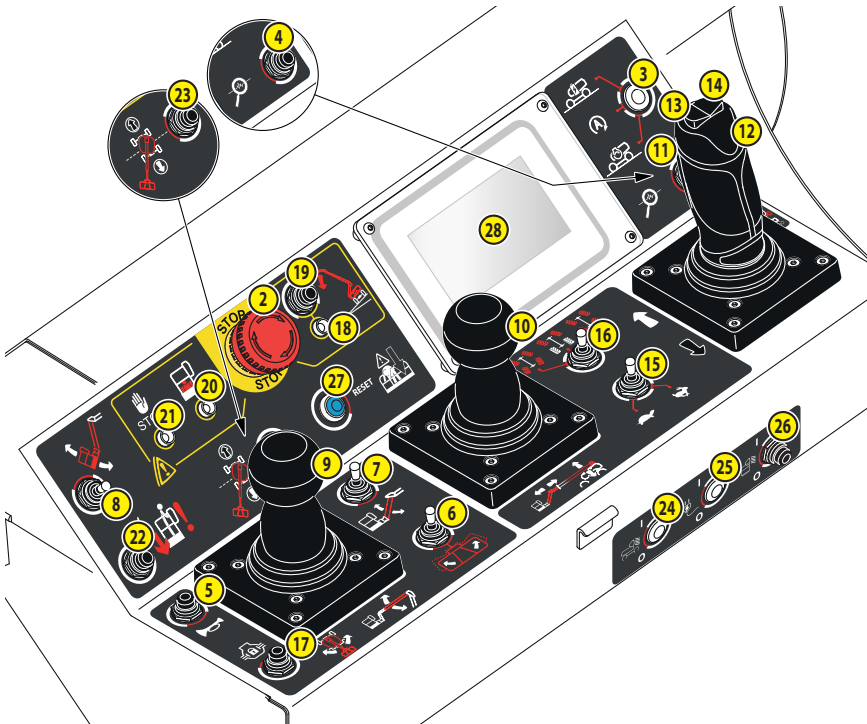
DIMENSIONS	
- l1	6,500 mm (21 ft 4 in)
- h17	2,390 mm (7 ft 10 po)
- l9	4,485 mm (14 ft 9 in)
- h18	2,770 mm (9 ft 1 in)
- h20	395 mm (15.6 in)
- y	2,300 mm (7 ft 7 in)
- b1	2,320 mm (7 ft 8 in)
- m2	350 mm (13.8 in)
- m7	285 mm (11.2 in)

GROUND LEVEL CONTROL PANEL



- 1 - EMERGENCY STOP BUTTON
- 2 - IGNITION SWITCH
- 3 - NOT USED
- 4 - NOT USED
- 5 - ACTIVATION SWITCH
 - A - CONTROLS IN THE PLATFORM
 - B - GROUND CONTROLS
- 6 to 17 - CONTROL KEYS
 - 6 - RAISE JIB ARM
 - 7 - LOWER JIB ARM
 - 8 - EXTEND TELESCOPIC ARM
 - 9 - RETRACT TELESCOPIC ARM
 - 10 - LIFT MAIN ARM
 - 11 - LOWER MAIN ARM
 - 12 - LIFT SECONDARY ARM
 - 13 - LOWER SECONDARY ARM
 - 14 - TURNTABLE ROTATION TO THE RIGHT
 - 15 - TURNTABLE ROTATION TO THE LEFT
 - 16 - TILT PLATFORM/JIB ARM UP
 - 17 - TILT PLATFORM/JIB ARM DOWN
- 18 - GROUND LEVEL DISPLAY SCREEN CONTROL KEYS
- 19 - GROUND LEVEL DISPLAY SCREEN
- 20 - BACKUP PUMP BUTTON

PLATFORM CONTROL PANEL



- 2 - EMERGENCY STOP BUTTON
- 3 - NOT USED
- 4 - DIAGNOSTICS BUTTON
- 5 - HORN BUTTON
- 6 - PLATFORM ROTATION SWITCH
- 7 - JIB ARM SWITCH
- 8 - PLATFORM/JIB ARM TILT SWITCH
- 9 - MAIN ARM/TURNTABLE ROTATION CONTROL HANDLE
- 10 - SECONDARY ARM/TELESCOPIC ARM CONTROL HANDLE
- 11 - ACTIVATION TRIGGER
- 12 - DRIVING/STEERING CONTROL HANDLE
- 13 - STEERING BUTTON TO THE LEFT
- 14 - STEERING BUTTON TO THE RIGHT
- 15 - DRIVING SPEED SWITCH
- 16 - STEERING MODE SWITCH
- 17 - DIFFERENTIAL LOCK BUTTON
- 18 - TILTING INDICATOR LIGHT
- 19 - UNLOCKING BUTTON
- 20 - OVERLOAD INDICATOR LIGHT
- 21 - FAULT INDICATOR LIGHT
- 22 - BACKUP PUMP BUTTON
- 23 - TURNTABLE SLEWING BUTTON
- 24 - NOT USED
- 25 - NOT USED
- 26 - WORKLIGHT BUTTON (OPTION)
- 27 - SECONDARY PROTECTION SYSTEM RESET BUTTON SPS (OPTION)
- 28 - DISPLAY SCREEN IN THE PLATFORM

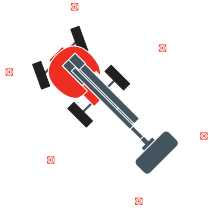
⚠ IMPORTANT ⚠

Operators should be aware of the risks connected with using the machine, notably:

- Risk of losing control.
- Risk of losing stability.

When using the machine, a safety helmet must be worn and it is strongly recommended to wear a safety harness.

MACHINE WORKING AREA

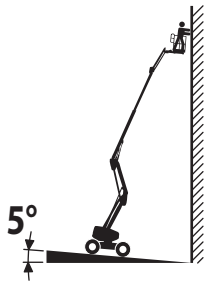


⚠ IMPORTANT ⚠

Do not use the machine if there is a wind speed of over 45 km/h (28 mph) (12.5 m/s).

- Before using the machine:
- Check the condition of the ground and the bearing surfaces.
 - Mark out the machine's working area.

TILT AND OVERLOAD



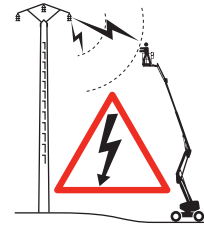
MAXIMUM AUTHORIZED CHASSIS TILT IN WORKING POSITION: 5°

- If the tilt of the chassis is greater than the maximum authorized chassis tilt in working position:
- The tilting indicator lamp flashes.
 - The audible alarm sounds intermittently.

PLATFORM OVERLOAD:

- If the load in the platform has reached the platform's maximum load capacity:
- The overload light indicator flashes.
 - The audible warning sounds continuously.

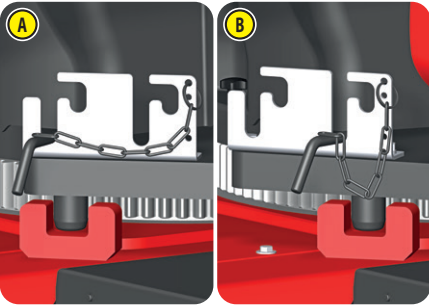
ELECTRICAL HAZARD



⚠ IMPORTANT ⚠

Never stand or work in the vicinity of any electrical sources.

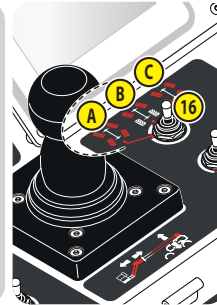
TURNTABLE LOCKING



⚠ IMPORTANT ⚠

- (A): the turntable must be locked in neutral position before loading the machine onto the vehicle and before unloading it.
- (A): the turntable must be locked in neutral position during transportation of the machine.
- (B): the turntable must be locked at 12° during lifting of the machine. Unlock the turntable in neutral position before using the machine.

STEERING MODE



⚠ IMPORTANT ⚠

- Always brake the machine before changing the steering mode.
- (A) 4 wheel steer: front and rear steering wheels in opposite directions.
 - (B) 2 wheel steer: front steering wheels.
 - (C) crab: front and rear steering wheels in the same direction.

EMERGENCY CONTROLS

⚠ IMPORTANT ⚠

Pay attention to any constructions or objects that may be under the platform.

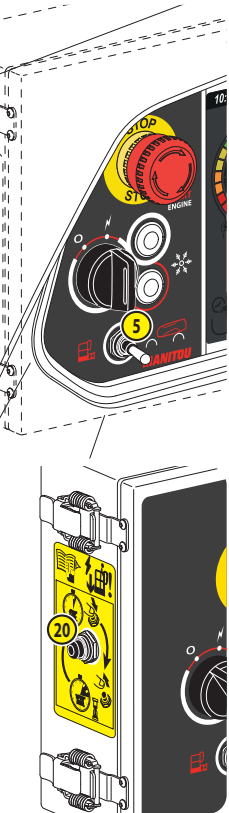
If the operator in the platform should fall ill or find himself incapable of activating the machine's functions, an operator on the ground can activate them using the ground level control panel.

If the machine is operational:

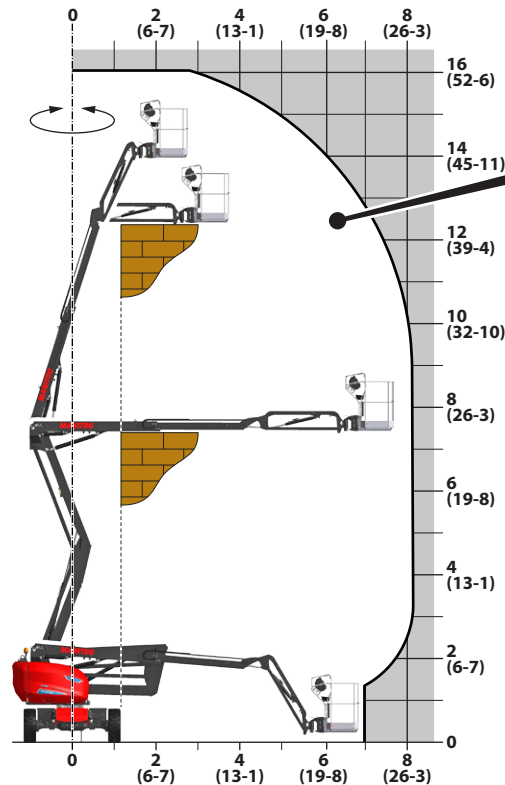
- Push and hold the activation switch (5) to the right (ground level controls position).
- Use the appropriate control buttons to position the platform.
- Release the activation switch.

If the machine is not working:

- Open the right-hand turntable cover.
- Make sure the 12 V battery connector is plugged in.
- Press the backup pump button (20).
- Position the platform by activating the machine's functions described on the "emergency control instructions" sticker.
- Release the backup pump button.



AMPLITUDE OF MOVEMENT



250 kg (550 lb)
= 90 kg (195 lb) + 2 people

Illustration units = meters (feet-inches).

DAILY MAINTENANCE

1 - INSPECTION PATROL

2 - HIGH VOLTAGE BATTERY CHARGE LEVEL

3 - HIGH VOLTAGE BATTERY ELECTROLYTE LEVEL

4 - HYDRAULIC OIL LEVEL

5 - MACHINE OPERATION

